



# The English Indices of Deprivation 2019 (IoD2019)

*The Indices relatively rank each small area in England from most deprived to least deprived*

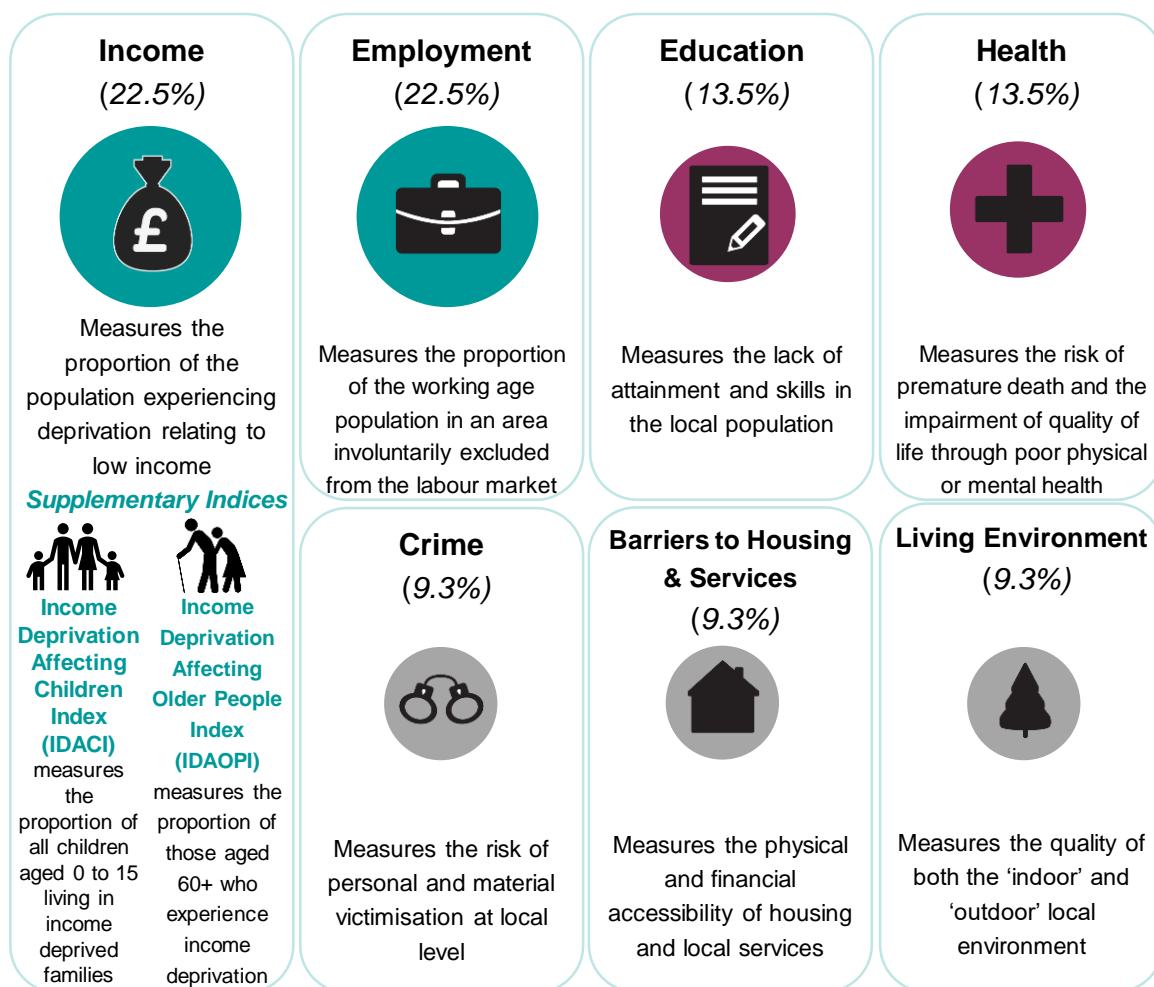
**1<sup>st</sup>  
most  
deprived  
area**



There are 32,844 small areas (Lower-layer Super Output Areas) in England, with an average population of 1,500

**32,844<sup>th</sup>  
least  
deprived  
area**

*There are 7 domains of deprivation, which combine to create the Index of Multiple Deprivation (IMD2019):*



## How can the IoD2019 be used?



- |   |  |
|---|--|
| ✓ comparing small areas across England  | ✗ quantifying how deprived a small area is           |
| ✓ identifying the most deprived small areas   | ✗ identifying deprived people                        |
| ✓ exploring the domains (or types) of deprivation                                       | ✗ saying how affluent a place is                     |
| ✓ comparing larger administrative areas e.g. local authorities                          | ✗ comparing with small areas in other UK countries   |
| ✓ looking at changes in relative deprivation between iterations (i.e. changes in ranks) | ✗ measuring absolute change in deprivation over time |



# The English Index of Multiple Deprivation 2019 (IMD2019)

