



Islington

Unitary authority



This profile was published on 4th July 2017

Health Profile 2017

Health in summary

The health of people in Islington is varied compared with the England average. Islington is one of the 20% most deprived districts/unitary authorities in England and about 35% (11,300) of children live in low income families. Life expectancy for men is lower than the England average.

Health inequalities

Life expectancy is 8.0 years lower for men and 2.7 years lower for women in the most deprived areas of Islington than in the least deprived areas.

Child health

In Year 6, 21.5% (322) of children are classified as obese. The rate of alcohol-specific hospital stays among those under 18 is 47*. This represents 18 stays per year. Levels of GCSE attainment and breastfeeding initiation are better than the England average.

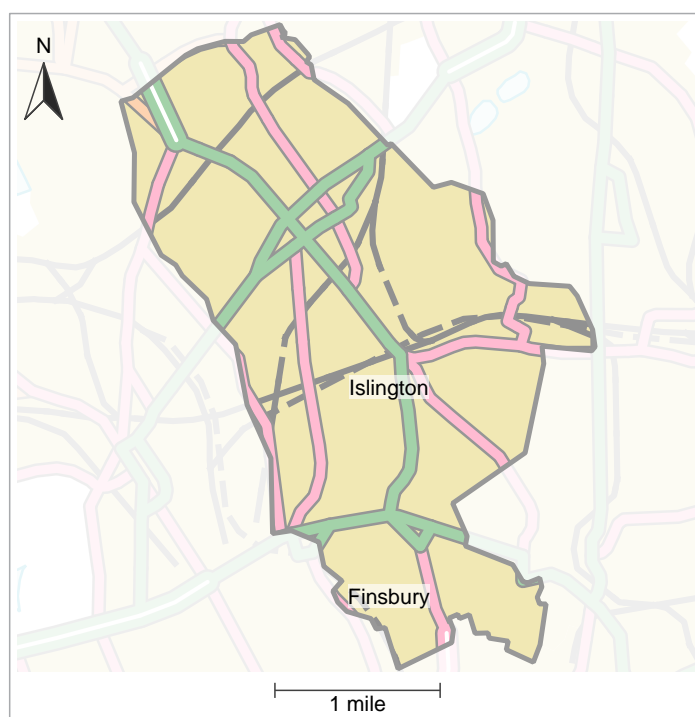
Adult health

The rate of alcohol-related harm hospital stays is 785*, worse than the average for England. This represents 1,290 stays per year. The rate of self-harm hospital stays is 107*, better than the average for England. This represents 253 stays per year. The rate of smoking related deaths is 333*, worse than the average for England. This represents 210 deaths per year. Estimated levels of adult excess weight are better than the England average. Rates of sexually transmitted infections and TB are worse than average.

Local priorities

Priorities in Islington include ensuring every child has the best start in life, preventing and managing long term conditions, improving mental health and reducing health inequalities. For more information see <http://evidencehub.islington.gov.uk>

* rate per 100,000 population



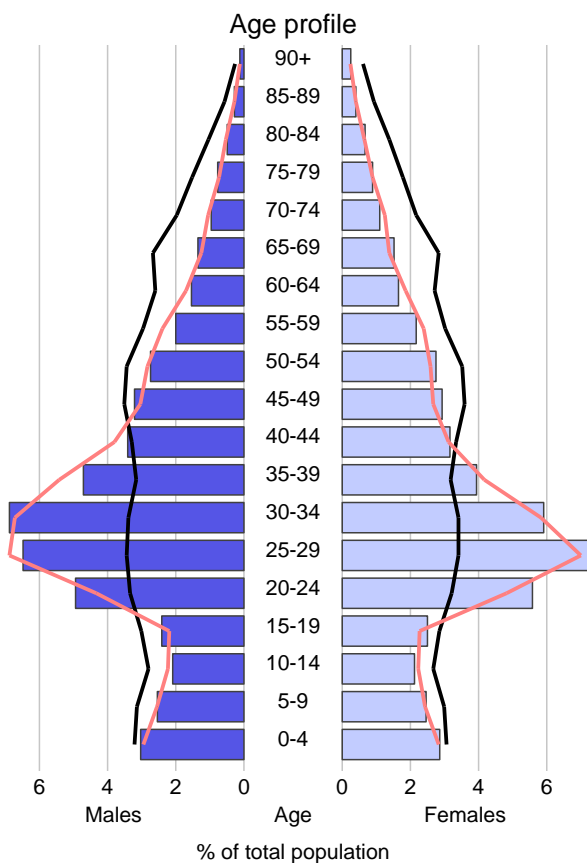
Contains National Statistics data © Crown copyright and database right 2017
Contains OS data © Crown copyright and database right 2017

This profile gives a picture of people's health in Islington. It is designed to help local government and health services understand their community's needs, so that they can work together to improve people's health and reduce health inequalities.

Visit www.healthprofiles.info for more profiles, more information and interactive maps and tools.

Follow [@PHE_uk](https://twitter.com/PHE_uk) on Twitter

Population: summary characteristics



	Males	Females	Persons
Islington (population in thousands)			
Population (2015):	114	114	228
Projected population (2020):	126	121	247
% people from an ethnic minority group:	29.8%	34.6%	32.2%
Dependency ratio (dependants / working population) x 100			33.9%

England (population in thousands)			
Population (2015):	27,029	27,757	54,786
Projected population (2020):	28,157	28,706	56,862
% people from an ethnic minority group:	13.1%	13.4%	13.2%
Dependency ratio (dependants / working population) x 100			60.7%

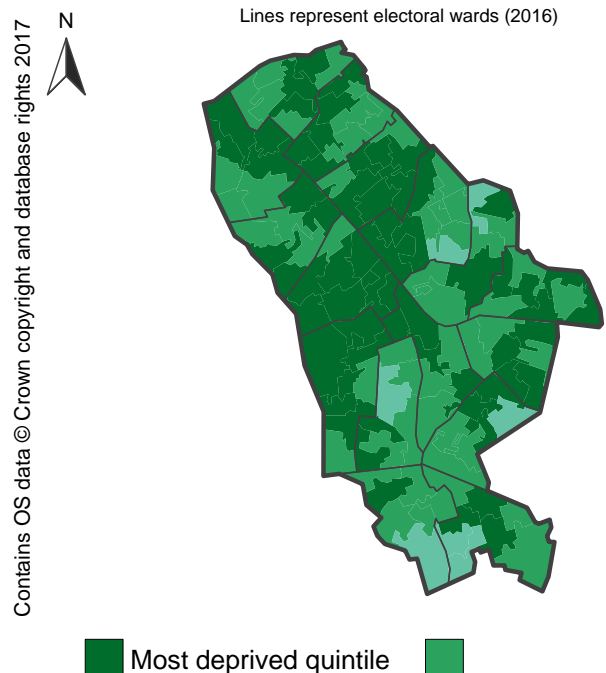
The age profile and table present demographic information for the residents of the area and England. They include a 2014-based population projection (to 2020), the percentage of people from an ethnic minority group (Annual Population Survey, October 2014 to September 2015) and the dependency ratio.

The dependency ratio estimates the number of dependants in an area by comparing the number of people considered less likely to be working (children aged under 16 and those of state pension age or above) with the working age population. A high ratio suggests the area might want to commission a greater level of services for older or younger people than those areas with a low ratio.

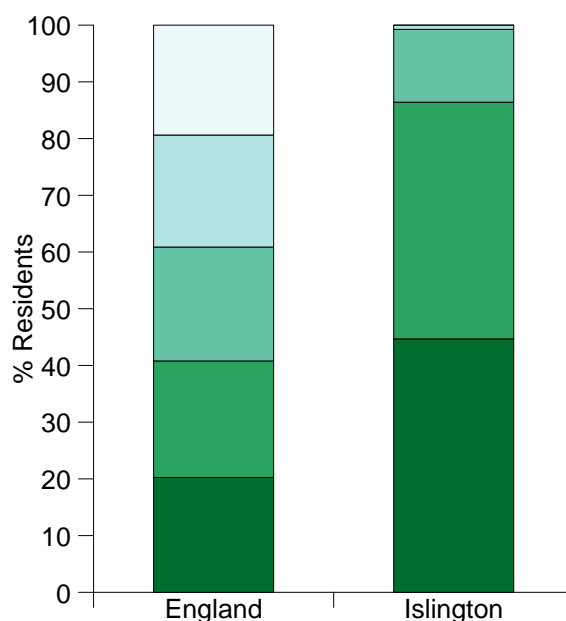
- Islington 2015 (Male)
- Islington 2015 (Female)
- England 2015
- Islington 2020 estimate

Deprivation: a national view

The map shows differences in deprivation in this area based on national comparisons, using national quintiles (fifths) of the Index of Multiple Deprivation 2015 (IMD 2015), shown by lower super output area. The darkest coloured areas are some of the most deprived neighbourhoods in England.



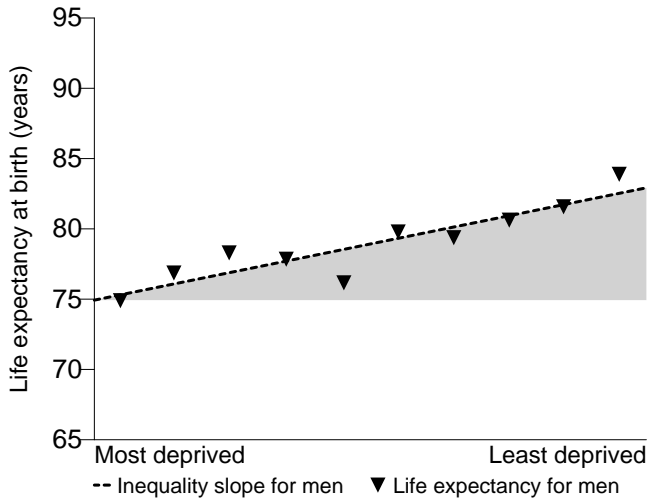
This chart shows the percentage of the population who live in areas at each level of deprivation.



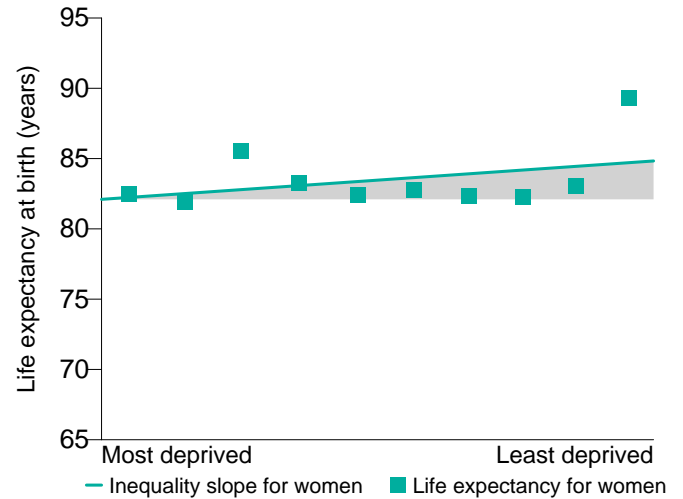
Life expectancy: inequalities in this local authority

The charts show life expectancy for men and women in this local authority for 2013-15. The local authority is divided into local deciles (tenths) by deprivation (IMD 2015), from the most deprived decile on the left of the chart to the least deprived decile on the right. The steepness of the slope represents the inequality in life expectancy that is related to deprivation in this local area. If there was no inequality in life expectancy the line would be horizontal.

Life expectancy gap for men: 8.0 years



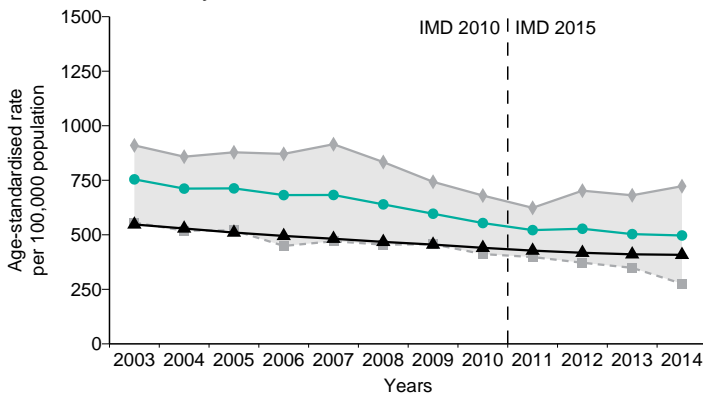
Life expectancy gap for women: 2.7 years



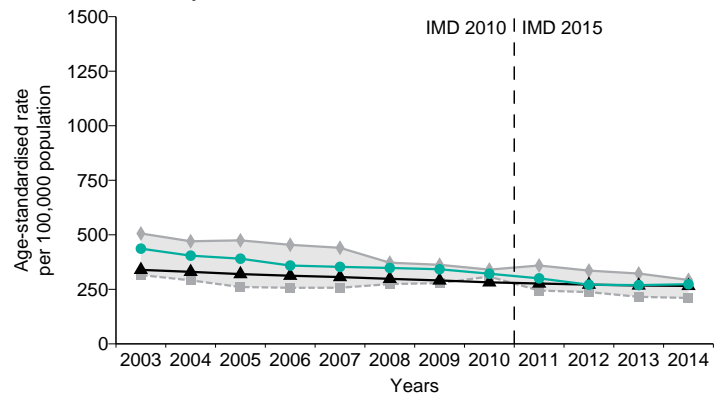
Health inequalities: changes over time

These charts provide a comparison of the changes in death rates in people under 75 (early deaths) between this area and England. Early deaths from all causes also show the differences between the most and least deprived local quintile in this area. Data from 2010-12 onwards have been revised to use IMD 2015 to define local deprivation quintiles (fifths), all prior time points use IMD 2010. In doing this, areas are grouped into deprivation quintiles using the Index of Multiple Deprivation which most closely aligns with time period of the data. This provides a more accurate way of discriminating changes between similarly deprived areas over time.

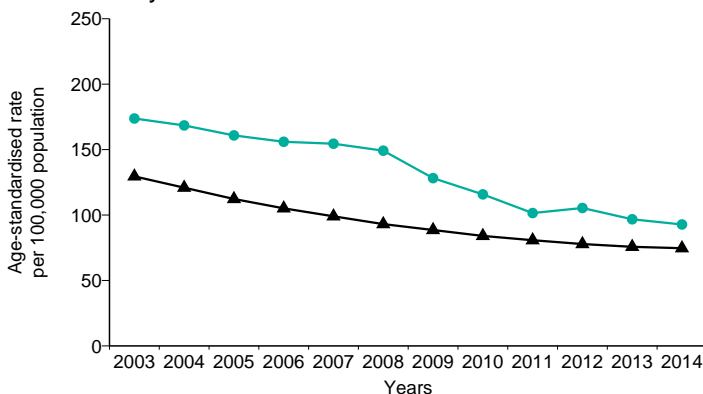
Early deaths from all causes: men



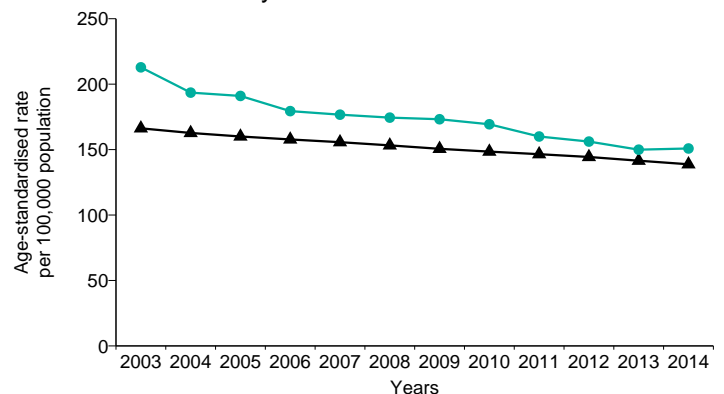
Early deaths from all causes: women



Early deaths from heart disease and stroke



Early deaths from cancer



Data points are the midpoints of three year averages of annual rates, for example 2005 represents the period 2004 to 2006. Where data are missing for local least or most deprived, the value could not be calculated as the number of cases is too small.

▲ England average ● Local average ■ Local least deprived ◆ Local most deprived ■ Local inequality

Health summary for Islington

The chart below shows how the health of people in this area compares with the rest of England. This area's result for each indicator is shown as a circle. The average rate for England is shown by the black line, which is always at the centre of the chart. The range of results for all local areas in England is shown as a grey bar. A red circle means that this area is significantly worse than England for that indicator; however, a green circle may still indicate an important public health problem.

- Significantly worse than England average
- Not significantly different from England average
- Significantly better than England average
- Not compared

Domain	Indicator	Period	Local count	Local value	Eng value	Eng worst	England range		Eng best
							England worst	England best	
Our communities	1 Deprivation score (IMD 2015)	2015	n/a	32.5	21.8	42.0			5.0
	2 Children in low income families (under 16s)	2014	11,280	34.5	20.1	39.2			6.6
	3 Statutory homelessness	2015/16	204	2.0	0.9				
	4 GCSEs achieved	2015/16	861	61.2	57.8	44.8			78.7
	5 Violent crime (violence offences)	2015/16	6,033	27.3	17.2	36.7			4.5
	6 Long term unemployment	2016	909	5.3 ^{Λ20}	3.7 ^{Λ20}	13.8			0.4
Children's and young people's health	7 Smoking status at time of delivery	2015/16	x ¹	x ¹	10.6 \$ ¹	26.0			1.8
	8 Breastfeeding initiation	2014/15	2,579	88.2	74.3	47.2			92.9
	9 Obese children (Year 6)	2015/16	322	21.5	19.8	28.5			9.4
	10 Admission episodes for alcohol-specific conditions (under 18s)†	2013/14 - 15/16	55	46.8	37.4	121.3			10.5
	11 Under 18 conceptions	2015	61	21.4	20.8	43.8			5.4
Adults' health and lifestyle	12 Smoking prevalence in adults	2016	n/a	13.4	15.5	25.7			4.9
	13 Percentage of physically active adults	2015	n/a	60.3	57.0	44.8			69.8
	14 Excess weight in adults	2013 - 15	n/a	52.8	64.8	76.2			46.5
	15 Cancer diagnosed at early stage	2015	280	55.1	52.4	39.0			63.1
Disease and poor health	16 Hospital stays for self-harm†	2015/16	253	107.2	196.5	635.3			55.7
	17 Hospital stays for alcohol-related harm†	2015/16	1,290	785.2	647	1,163			374
	18 Recorded diabetes	2014/15	10,178	5.1	6.4	9.2			3.3
	19 Incidence of TB	2013 - 15	169	25.4	12.0	85.6			0.0
	20 New sexually transmitted infections (STI)	2016	3,680	2123.7	795	3,288			223
	21 Hip fractures in people aged 65 and over†	2015/16	111	577.4	589	820			312
Life expectancy and causes of death	22 Life expectancy at birth (Male)	2013 - 15	n/a	78.7	79.5	74.3			83.4
	23 Life expectancy at birth (Female)	2013 - 15	n/a	83.1	83.1	79.4			86.7
	24 Infant mortality	2013 - 15	27	3.1	3.9	8.2			0.8
	25 Killed and seriously injured on roads	2013 - 15	253	38.2	38.5	103.7			10.4
	26 Suicide rate	2013 - 15	61	11.0	10.1	17.4			5.6
	27 Smoking related deaths	2013 - 15	629	332.7	283.5				
	28 Under 75 mortality rate: cardiovascular	2013 - 15	309	92.8	74.6	137.6			43.1
	29 Under 75 mortality rate: cancer	2013 - 15	515	150.8	138.8	194.8			98.6
	30 Excess winter deaths	Aug 2012 - Jul 2015	206	20.9	19.6	36.0			6.9

Indicator notes

1 Index of Multiple Deprivation (IMD) 2015 2 % children (under 16) in low income families 3 Eligible homeless people not in priority need, crude rate per 1,000 households 4 5 A*-C including English & Maths, % pupils at end of key stage 4 resident in local authority 5 Recorded violence against the person crimes, crude rate per 1,000 population 6 Crude rate per 1,000 population aged 16-64 7 % of women who smoke at time of delivery 8 % of all mothers who breastfed their babies in the first 48hrs after delivery 9 % school children in Year 6 (age 10-11) 10 Persons under 18 admitted to hospital due to alcohol-specific conditions, crude rate per 100,000 population 11 Under-18 conception rate per 1,000 females aged 15 to 17 (crude rate) 12 Current smokers (aged 18 and over), Annual Population Survey 13 % adults (aged 16 and over) achieving at least 150 mins physical activity per week, Active People Survey 14 % adults (aged 16 and over) classified as overweight or obese, Active People Survey 15 Experimental statistics - % of cancers diagnosed at stage 1 or 2 16 Directly age sex standardised rate per 100,000 population 17 Admissions involving an alcohol-related primary diagnosis or an alcohol-related external cause (narrow definition), directly age standardised rate per 100,000 population 18 % people (aged 17 and over) on GP registers with a recorded diagnosis of diabetes 19 Crude rate per 100,000 population 20 All new diagnoses (excluding chlamydia under age 25), crude rate per 100,000 population aged 15 to 64 21 Directly age-sex standardised rate of emergency admissions, per 100,000 population aged 65 and over 22, 23 The average number of years a person would expect to live based on contemporary mortality rates 24 Rate of deaths in infants aged under 1 year per 1,000 live births 25 Rate per 100,000 population 26 Directly age standardised mortality rate from suicide and injury of undetermined intent per 100,000 population (aged 10 and over) 27 Directly age standardised rate per 100,000 population aged 35 and over 28 Directly age standardised rate per 100,000 population aged under 75 29 Directly age standardised rate per 100,000 population aged under 75 30 Ratio of excess winter deaths (observed winter deaths minus expected deaths based on non-winter deaths) to average non-winter deaths (three years)

† Indicator has had methodological changes so is not directly comparable with previously released values. € "Regional" refers to the former government regions.

^{Λ20} Value based on an average of monthly counts x¹ Value not published for data quality reasons \$¹ There is a data quality issue with this value

If 25% or more of areas have no data then the England range is not displayed.

Please send any enquiries to healthprofiles@phe.gov.uk

You may re-use this information (not including logos) free of charge in any format or medium, under the terms of the Open Government Licence. To view this licence, visit www.nationalarchives.gov.uk/doc/open-government-licence/version/3/